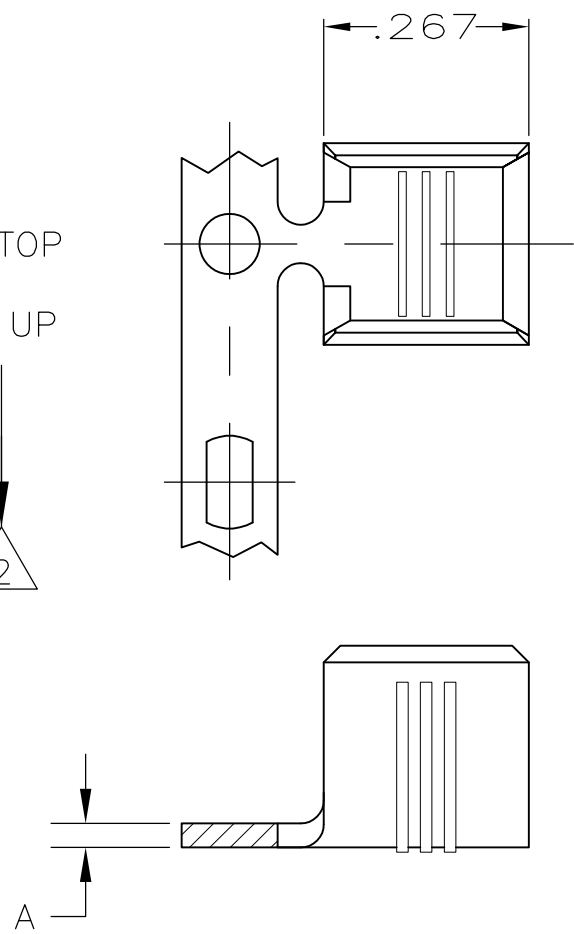


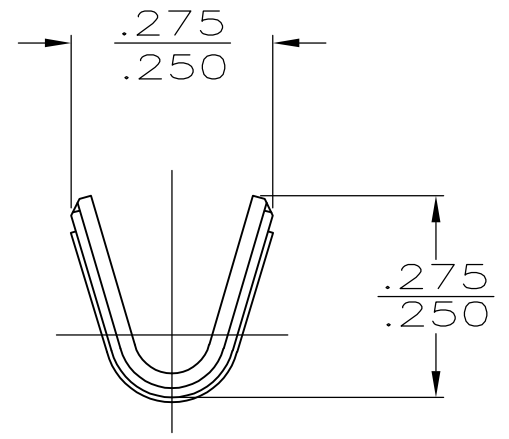
THIS DRAWING IS UNPUBLISHED. RELEASED FOR PUBLICATION  
 © COPYRIGHT BY TYCO ELECTRONICS CORPORATION. ALL RIGHTS RESERVED.

LOC	DIST	REVISIONS					
AF	50	P	LTR	DESCRIPTION	DATE	DWN	APVD
		P2		REVISED PER ECR-07-031111	10JAN08	HMR	GP

REELING OFF TOP  
OF REEL  
WIRE BARREL UP



- 1 PRODUCT PROVIDED IN STRIP FORM ON REELS;  
BREAKS MAY BE PRESENT
- △2 STANDARD REELING.
- △3 REVERSE REELING.
- 4 CRIMP WIDTH: .180 F TYPE  
CRIMP HEIGHT: (±.002) = (TOTAL CMA + 28,300) / 289,800  
FOR APPLICATOR INFORMATION CALL: 1-800-722-1111  
FOR PRODUCT INFORMATION CALL: 1-800-522-6752
- △5 WIRE RANGE FOR NEW APPLICATIONS: 7000-12,000 CMA  
(WIRE RANGE APPROVED FOR APPLICATIONS IMPLEMENTED  
PRIOR TO 2005: 9000-16,000 CMA).



△3	.031±.001		.000080 MIN TIN	#3 HARD STEEL	61299-8
			NONE	#2 HARD BRASS	61299-3
△2	.032±.001	△5		#3 HARD STEEL	61299-2
	.031±.001		.000080 MIN TIN		61299-1
REELING	A	CMA WIRE SIZE	FINISH	MATERIAL	PART NUMBER

THIS DRAWING IS A CONTROLLED DOCUMENT.

DIMENSIONS: INCHES	TOLERANCES UNLESS OTHERWISE SPECIFIED:	DWN MICHAEL S. FEHER 19DEC2002	Tyco Electronics Corporation Harrisburg, PA 17105-3608	
	0 PLC ± - 1 PLC ± - 2 PLC ± - 3 PLC ± .010 4 PLC ± - ANGLES ± -	CHK GARY PORTA 19DEC2002	NAME GARY PORTA	
MATERIAL SEE TABLE	FINISH SEE TABLE	APVD GARY PORTA 19DEC2002	PRODUCT SPEC APPLICATION SPEC	
		WEIGHT -	SIZE A3	CAGE CODE 00779
			DRAWING NO C-61299	RESTRICTED TO -
		CUSTOMER DRAWING		SCALE 4:1
		SHEET 1 OF 1		REV P2